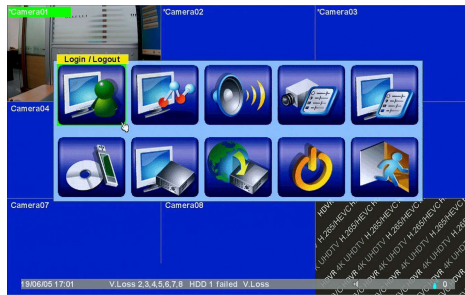


Quick Operation

1. Login/Logout
2. System Status
3. Display
4. System Setup
- 4.1 Pre-Camera
- 4.2 Camera
- 4.3 HDD
- 4.4 Password
- 4.5 System
- 4.6 Network
- 4.7 Factory Defaults

To login/logout the system, press **MENU** in split-window display to call up Menu display, and then press **ENTER** to enter Login/Logout display as shown.

Factory-preset login name: aa password: 11



NOTE :

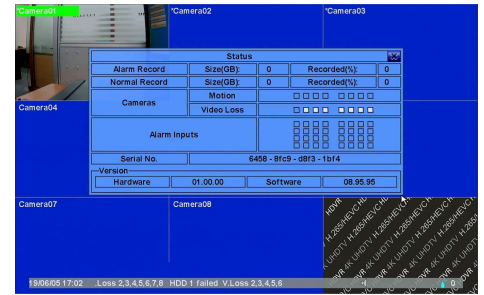
In case the user forgets the user name and password for all levels of administrator, contact your local dealer or business process engineering.

1

Quick Operation

1. Login/Logout
2. System Status
3. Display
4. System Setup
- 4.1 Pre-Camera
- 4.2 Camera
- 4.3 HDD
- 4.4 Password
- 4.5 System
- 4.6 Network
- 4.7 Factory Defaults

In Menu display, press **▲▼◀▶** to change the highlighted option to **Status**, and then press **ENTER** to call up Status display as shown. Status display includes Alarm Recording Status, Normal Recording Status, Camera Status, Alarm Input Status, Product Serial Number, and Product Version Number. Press **ESC (Mouse: Right Click)** to escape from Status display, and return to Menu display.



NOTE :

In each state block, displaying white representatives corresponding situation occurs, sequentially left to right, top to bottom for the channel belongs, can distinguish these from the box immediately which channels are triggered.

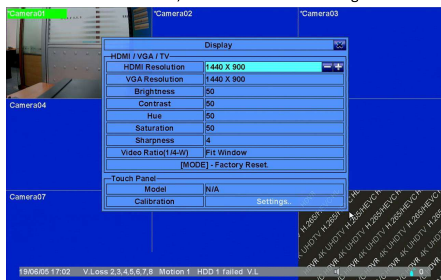
2

Quick Operation

1. Login/Logout
2. System Status
3. Display
4. System Setup
- 4.1 Pre-Camera
- 4.2 Camera
- 4.3 HDD
- 4.4 Password
- 4.5 System
- 4.6 Network
- 4.7 Factory Defaults

In Menu display, press **▲▼◀▶** to change the highlighted option to **Display**, and then press **ENTER** to call up Display dialog as shown. There are several items which can be adjusted. The operations are as below:

+/- Press these buttons to adjust the selected item.
MENU/ESC Press this button to escape from this screen.
Press **ENTER** to exit and save, **ESC** to exit without saving.



NOTE :

The recommended screen size is 17 Inches LCD or above. If use too small screen, it will not be able to display the screen.

3

Quick Operation

1. Login/Logout
2. System Status
3. Display
4. System Setup
- 4.1 Pre-Camera
- 4.2 Camera
- 4.3 HDD
- 4.4 Password
- 4.5 System
- 4.6 Network
- 4.7 Factory Defaults

In Menu display, press **▲▼◀▶** to change the highlighted option to **Setup**, and then press **ENTER** to call up Setup Menu display as shown.



NOTE :

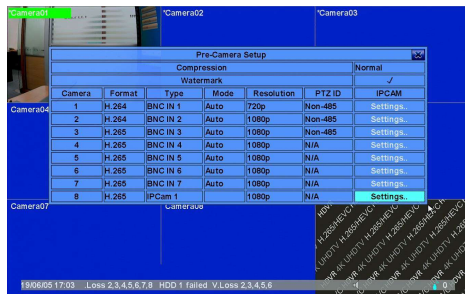
To enter Setup Menu display of the system, please login as Administrator first.

4

Quick Operation

1. Login/Logout
2. System Status
3. Display
4. System Setup
- 4.1 Pre-Camera
- 4.2 Camera
- 4.3 HDD
- 4.4 Password
- 4.5 System
- 4.6 Network
- 4.7 Factory Defaults

There are IP CAM and analog cameras can be connected. The **Pre-Camera** Setup allows the administrator to define some fundamental attributes for all the installed cameras, such as Compression and Resolution.



NOTE :

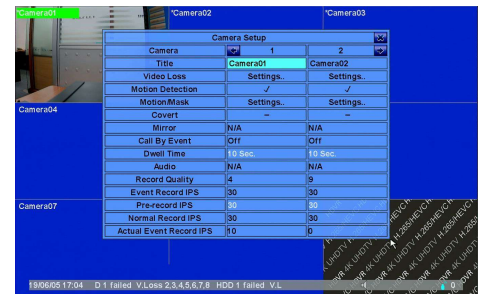
In accordance with different models, different resolutions are adjustable.

5

Quick Operation

1. Login/Logout
2. System Status
3. Display
4. System Setup
- 4.1 Pre-Camera
- 4.2 Camera
- 4.3 HDD
- 4.4 Password
- 4.5 System
- 4.6 Network
- 4.7 Factory Defaults

The Camera Setup allows the administrator to define the attributes for each camera.



NOTE :

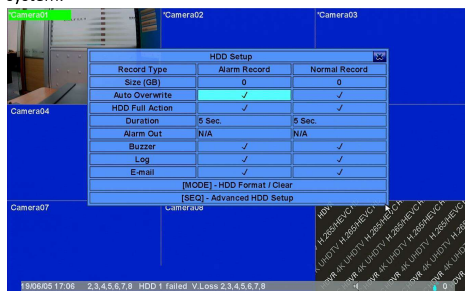
The highest record quality is 9, and the highest record IPS is 30. The higher the set value, the fewer the number of days video.

6

Quick Operation

1. Login/Logout
2. System Status
3. Display
4. System Setup
- 4.1 Pre-Camera
- 4.2 Camera
- 4.3 HDD
- 4.4 Password
- 4.5 System
- 4.6 Network
- 4.7 Factory Defaults

The HDD Setup allows the administrator to format/clear each HDD, set Alarm Record size and Normal Record size of each HDD, and define the behaviors for Alarm Record and Normal Record if it reaches the end of the last HDD in the system.



NOTE :

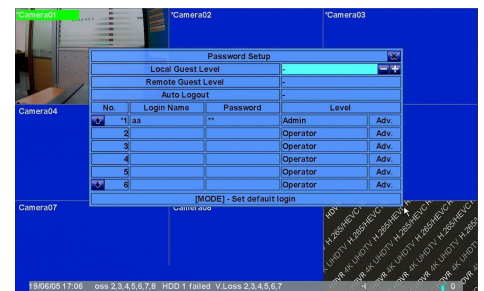
It can send email notification while hdd failure.

7

Quick Operation

1. Login/Logout
2. System Status
3. Display
4. System Setup
- 4.1 Pre-Camera
- 4.2 Camera
- 4.3 HDD
- 4.4 Password
- 4.5 System
- 4.6 Network
- 4.7 Factory Defaults

The Password Setup allows the administrator to add new users, delete existing ones, and/or modify the user's name, password, and/or level.



NOTE :

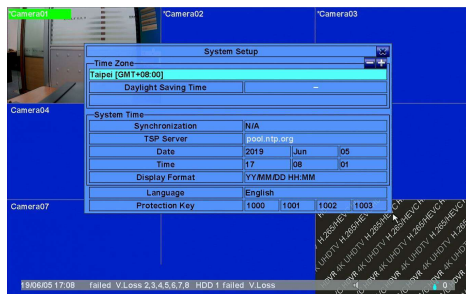
The default guest level are "-", press +/- buttons to change the level.

8

Quick Operation

1. Login/Logout
2. System Status
3. Display
4. System Setup
- 4.1 Pre-Camera
- 4.2 Camera
- 4.3 HDD
- 4.4 Password
- 4.5 System
- 4.6 Network
- 4.7 Factory Defaults

The System Setup allows the administrator to set the system time, time zone, time synchronization, language, etc.



NOTE :

If connected to the Internet, set time synchronized with TSP Server, the system will try to do time synchronization with the specified TSP server at the system preset interval.

9

Search Operation

1. Search By Time
2. Search By Event
3. Smart Search
4. Search Archive Files
5. POS Search
6. Exit

There are five ways to search the recorded video/audio for playback: Search by time, Search by event, Smart search, Search archived files and POS search.



NOTE :

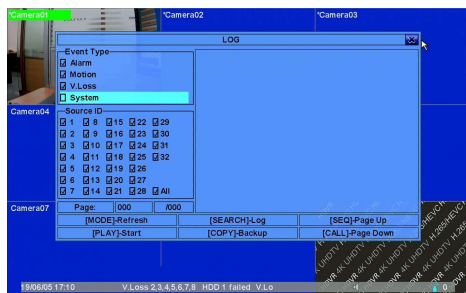
During playback, it will keep recording.

11

Search Operation

1. Search By Time
2. Search By Event
3. Smart Search
4. Search Archive Files
5. POS Search
6. Exit

There are four different types of event logs, including Alarm, Motion, Video Loss, and System.



NOTE :

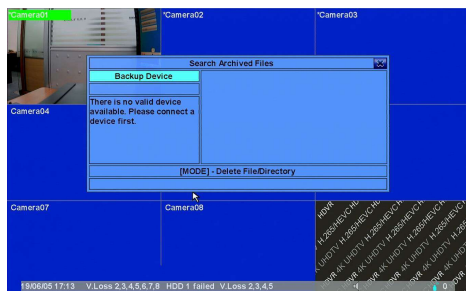
Event logs record all user action records.

13

Search Operation

1. Search By Time
2. Search By Event
3. Smart Search
4. Search Archive Files
5. POS Search
6. Exit

Search Archive Files: search for the archived files in the selected disk storage for easy operation.



NOTE :

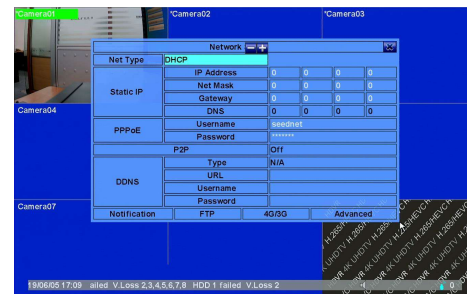
When user back up archive files, the machine will also generate batch files for each camera. User can run batch files in PC to automatically replay the corresponding backup files.

15

Quick Operation

1. Login/Logout
2. System Status
3. Display
4. System Setup
- 4.1 Pre-Camera
- 4.2 Camera
- 4.3 HDD
- 4.4 Password
- 4.5 System
- 4.6 Network
- 4.7 Factory Defaults

The Network Setup allows the administrator to setup all Ethernet network related parameters, such as DHCP, PPPOE and Static IP.



Factory Defaults, it will reset all the settings to factory default values.

NOTE :

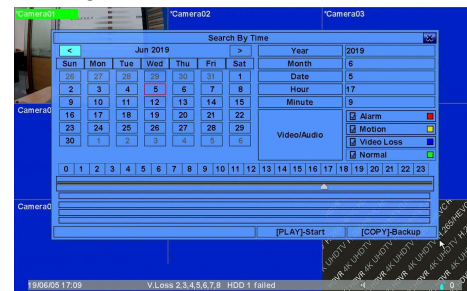
Connection Account Settings questions, please contact your local network carriers.

10

Search Operation

1. Search By Time
2. Search By Event
3. Smart Search
4. Search Archive Files
5. POS Search
6. Exit

Time Search: You can select the year, month, day, hour, and minute to playback. You can also check whether the alarm, motion, video loss or normal according to the time index below.



NOTE :

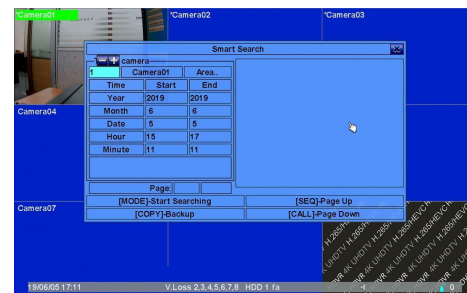
After the time is selected, you can choose to play or back up directly.

12

Search Operation

1. Search By Time
2. Search By Event
3. Smart Search
4. Search Archive Files
5. POS Search
6. Exit

Smart Search: Select a specific camera, a specific area, and recall the image file that has changed within the set time.



NOTE :

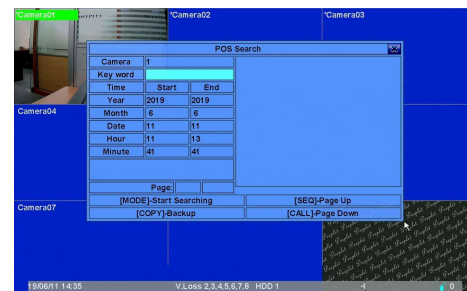
First select the area, then select the time, you can start the search. It is recommended that the time and date do not cross one day.

14

Search Operation

1. Search By Time
2. Search By Event
3. Smart Search
4. Search Archive Files
5. POS Search
6. Exit

POS search: you can enter key words to search POS video data and do simple operations.



NOTE :

POS can be set in the RS-232/485/IR settings.

16