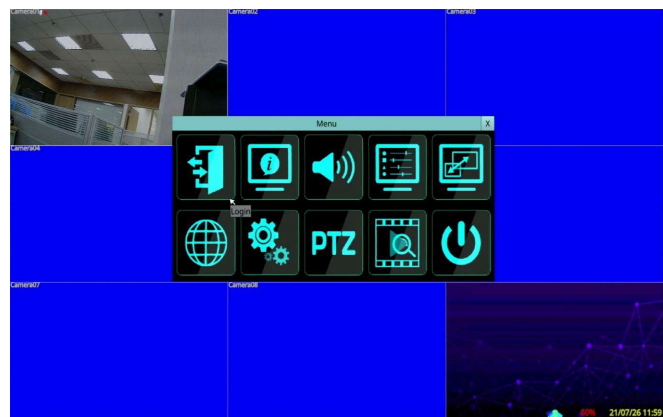


Quick Operation

- 1. Login/Logout
- 2. System Status
- 3. Display
- 4. System Setup
- 4.1 Camera
- 4.2 PTZ
- 4.3 HDD
- 4.4 Password
- 4.5 System
- 4.6 Network

To Login/Logout system, right-click the mouse in split-window to call up **Menu** display and then left-click the mouse to enter **Login/Logout** as shown.

Factory-preset login name: aa password: 11



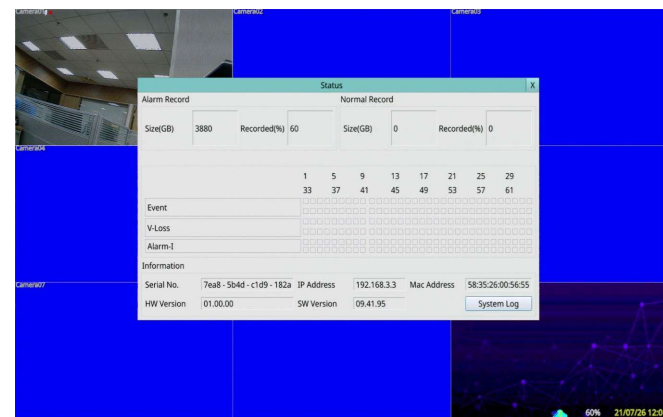
NOTE : In case the user forgets the user name and password for all levels of administrator, contact your local dealer or business process engineering.

1

Quick Operation

- 1. Login/Logout
- 2. System Status
- 3. Display
- 4. System Setup
- 4.1 Camera
- 4.2 PTZ
- 4.3 HDD
- 4.4 Password
- 4.5 System
- 4.6 Network

In **Menu** display, left-click the mouse to select the **Status**. The System Status will be shown. It includes alarm recording status, normal recording status, camera status, alarm input status, serial number, version, and IP address. Press down X to leave the system status and return to the main menu.



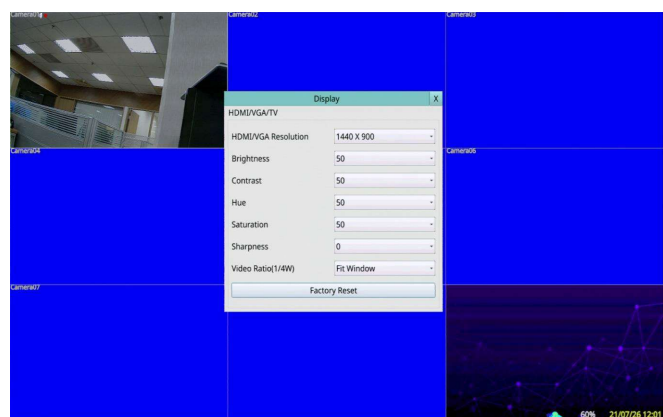
NOTE : In each state block, displaying color representatives corresponding situation occurs, sequentially left to right, top to bottom for the channel belongs, can distinguish these from the box immediately which channels are triggered.

2

Quick Operation

- 1. Login/Logout
- 2. System Status
- 3. Display
- 4. System Setup
- 4.1 Camera
- 4.2 PTZ
- 4.3 HDD
- 4.4 Password
- 4.5 System
- 4.6 Network

In **Menu** display, left-click the mouse to select the **VGA Setup**. The Display setup will be shown. It provides different screen display setting adjustment items. The operations are as below:
Dropdown numerical options to adjust the setting value.
X to exit the display setting.



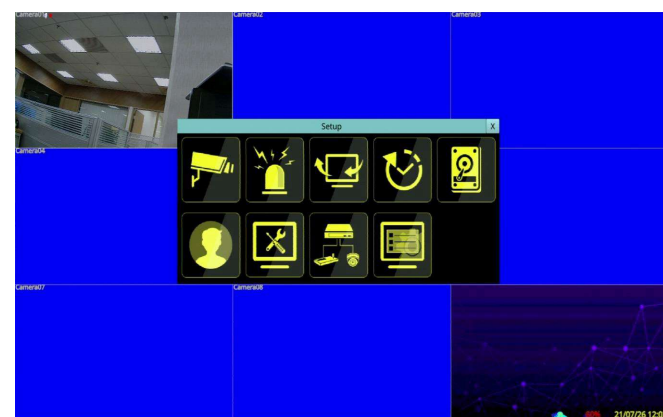
NOTE : The recommended screen size is 17 Inches LCD or above. If use too small screen, it will not be able to display the screen.

3

Quick Operation

- 1. Login/Logout
- 2. System Status
- 3. Display
- 4. System Setup
- 4.1 Camera
- 4.2 PTZ
- 4.3 HDD
- 4.4 Password
- 4.5 System
- 4.6 Network

In **Menu** display, left-click the mouse to select the **Setup**. The Setup menu will be shown.



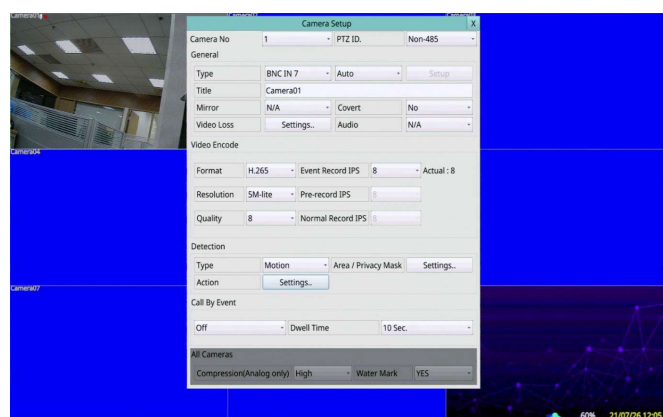
NOTE : To enter Setup Menu display of the system, please login as Administrator first.

4

Quick Operation

- 1. Login/Logout
- 2. System Status
- 3. Display
- 4. System Setup
- 4.1 Camera
- 4.2 PTZ
- 4.3 HDD
- 4.4 Password
- 4.5 System
- 4.6 Network

In the **Setup** menu display, left-click the mouse to select the **Camera**. The Camera Setup menu will be shown. It can be done for a single camera detailed item setting and adjustment. Such as adjustable recording resolution, compression, quality, and IPS. Set motion detection and events.



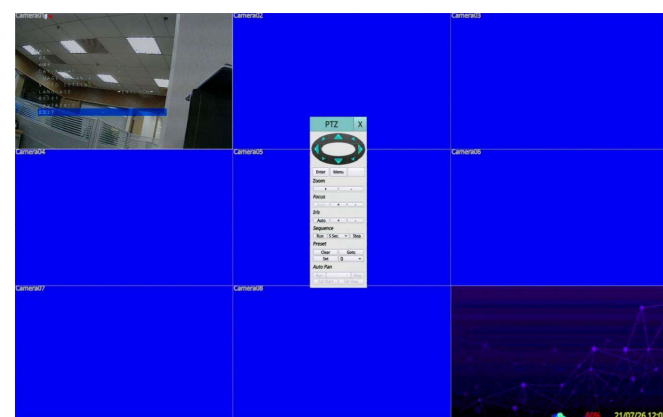
NOTE : The highest record quality is 9, and the highest record IPS is 30. The higher the set value, the fewer the number of days video.

5

Quick Operation

- 1. Login/Logout
- 2. System Status
- 3. Display
- 4. System Setup
- 4.1 Camera
- 4.2 PTZ
- 4.3 HDD
- 4.4 Password
- 4.5 System
- 4.6 Network

In **Menu** display, left-click the mouse to select the **PTZ**. The PTZ control panel will be shown. Press Menu to open the UTC control menu of the camera.



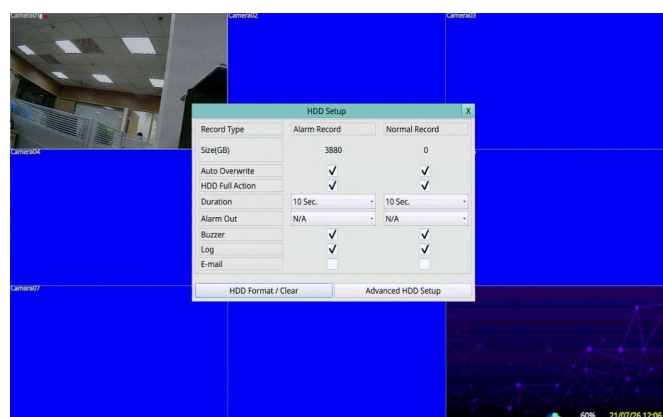
NOTE : It needs to set the PTZ ID as Non-485 in the camera first, then it can use UTC to control the camera.

6

Quick Operation

- 1. Login/Logout
- 2. System Status
- 3. Display
- 4. System Setup
- 4.1 Camera
- 4.2 PTZ
- 4.3 HDD
- 4.4 Password
- 4.5 System
- 4.6 Network

In the **Setup** menu display, left-click the mouse to select the **HDD**. The HDD Setup menu will be shown. It can set the hard disk setting and format the hard disk.



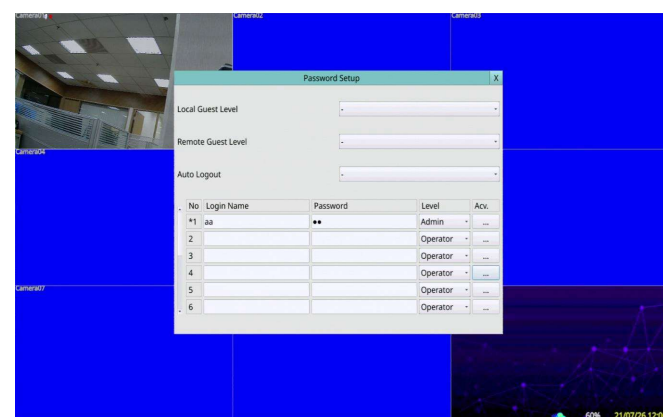
NOTE : It can sent email notification while hdd failure.

7

Quick Operation

- 1. Login/Logout
- 2. System Status
- 3. Display
- 4. System Setup
- 4.1 Camera
- 4.2 PTZ
- 4.3 HDD
- 4.4 Password
- 4.5 System
- 4.6 Network

In the **Setup** menu display, left-click the mouse to select the **Password**. The Password Setup menu will be shown. It can set the user account, password, and user level.



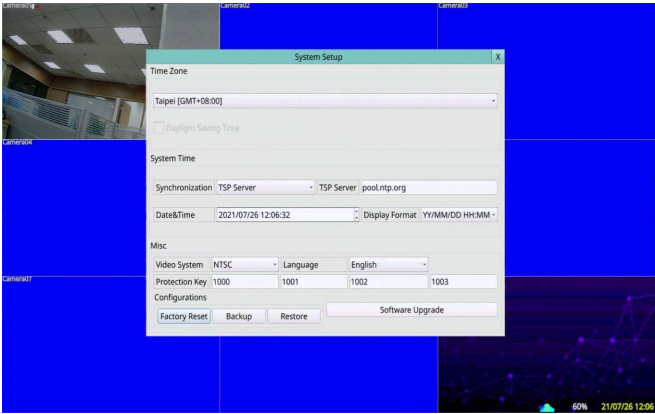
NOTE : The default guest level is "-" (no). If need to customize the guest permission, you need to change the level yourself.

8

Quick Operation

- 1. Login/Logout
- 2. System Status
- 3. Display
- 4. System Setup
- 4.1 Camera
- 4.2 PTZ
- 4.3 HDD
- 4.4 Password
- 4.5 System
- 4.6 Network

In the **Setup** menu display, left-click the mouse to select the **System**. The System Setup menu will be shown. It can set the system time, time zone, language, soft upgrade, and factory reset.



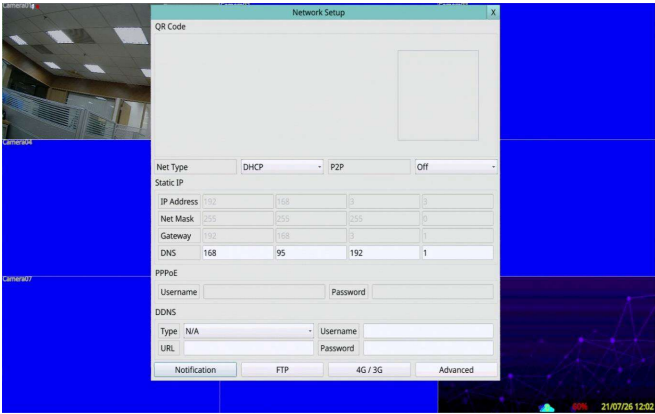
NOTE :
If connected to the Internet, the time synchronization can be changed to the TSP server.
Factory reset will reset all data back to the factory default values.

9

Quick Operation

- 1. Login/Logout
- 2. System Status
- 3. Display
- 4. System Setup
- 4.1 Camera
- 4.2 PTZ
- 4.3 HDD
- 4.4 Password
- 4.5 System
- 4.6 Network

In the **Menu** display, left-click the mouse to select the **Network**. The Network Setup menu will be shown. It can set up all Ethernet network-related parameters, such as DHCP, PPPOE, Static IP, and enable P2P to get the QR Code.



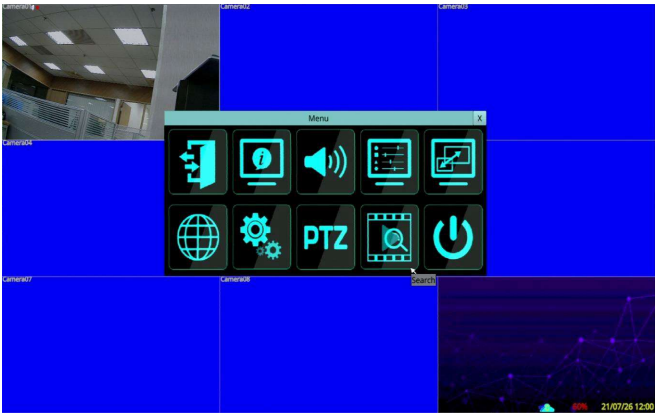
NOTE :
For the Connection Account Settings questions, please contact your local network carriers.

10

Search Operation

- 1. Search By Time
- 2. Search By Event
- 3. Smart Search
- 4. POS Search
- 5. Backup Files

In the **Menu** display, left-click the mouse to select the **Search**. The search function is divided into Search by time, Search by event, Smart search, POS search, and Backup files.



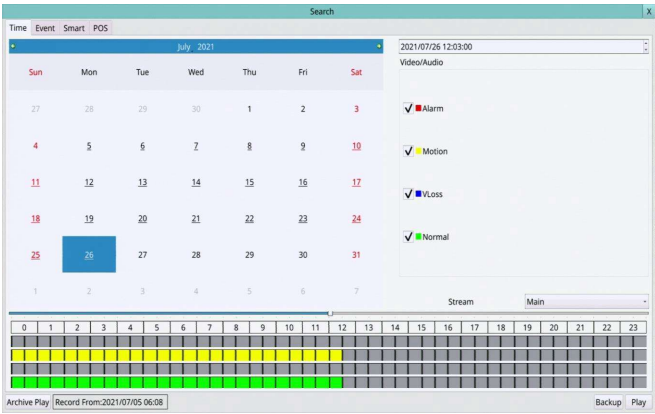
NOTE :
During playback, it will keep recording.

11

Search Operation

- 1. Search By Time
- 2. Search By Event
- 3. Smart Search
- 4. POS Search
- 5. Backup Files

Search by Time : It can select the year, month, day, hour, and minute to playback. It also can check whether the alarm, motion, video loss, or normal according to the time index below.



Archive Play, It can search for the archived files in the selected disk storage for easy operation.

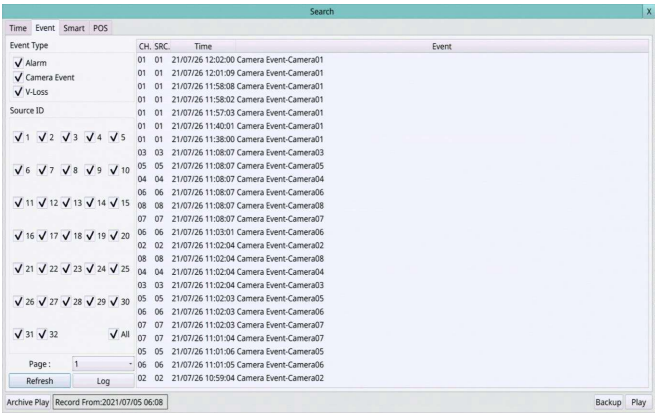
NOTE :
After the time is selected, you can choose to play or back up directly.

12

Search Operation

- 1. Search By Time
- 2. Search By Event
- 3. Smart Search
- 4. POS Search
- 5. Backup Files

Search by Event : There are different types of event logs, including Alarm, Motion, and Video Loss.



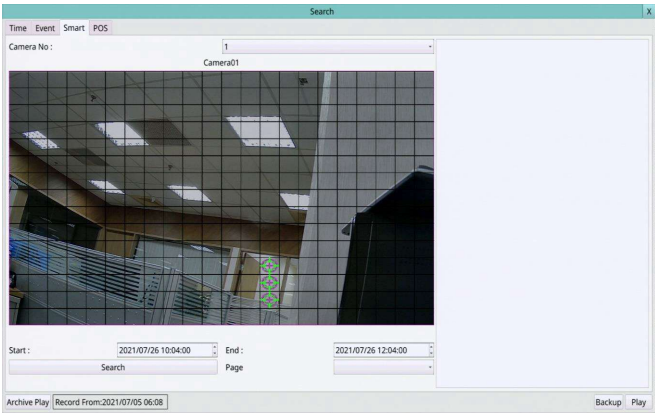
NOTE :
System logs record all user action records. Please check the log of system operation information in the system status.

13

Search Operation

- 1. Search By Time
- 2. Search By Event
- 3. Smart Search
- 4. POS Search
- 5. Backup Files

Smart Search : Select a specific camera, a specific area, and recall the image file that has changed during the setting period.



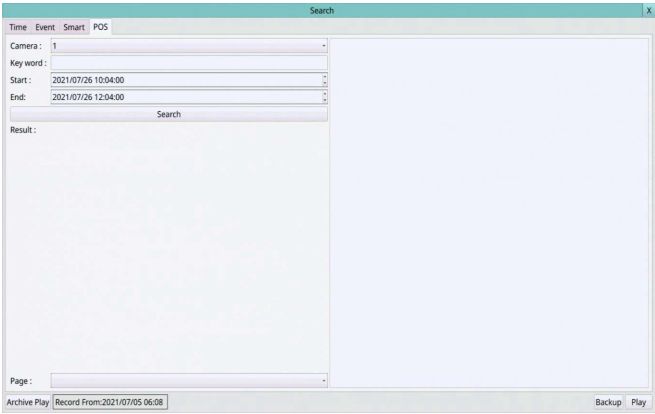
NOTE :
First, select the area, then select the time, you can start the search. It is recommended that the time and date do not cross one day.

14

Search Operation

- 1. Search By Time
- 2. Search By Event
- 3. Smart Search
- 4. POS Search
- 5. Backup Files

POS search : You can enter keywords to search POS video data and do operations.



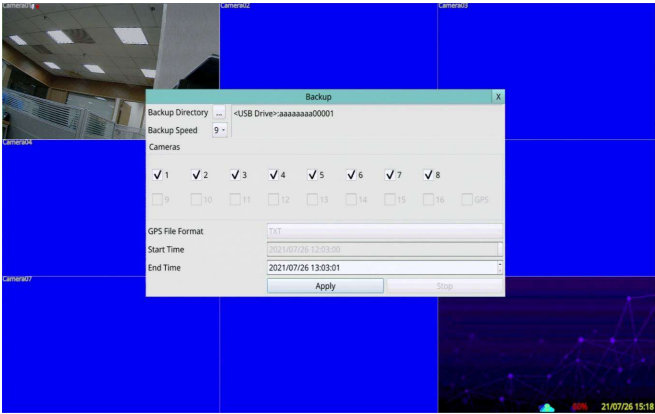
NOTE :
POS can be set in the RS-232/485/IR settings.

15

Search Operation

- 1. Search By Time
- 2. Search By Event
- 3. Smart Search
- 4. POS Search
- 5. Backup Files

Backup files : It uses the time of the search by time as the start time. Click ... to set the backup folder first, then you can check the camera and set the end time to backup.



NOTE :
When the user backs up archive files, the machine will also generate batch files for each camera. Users can run batch files on PC to automatically replay the corresponding backup files.

16